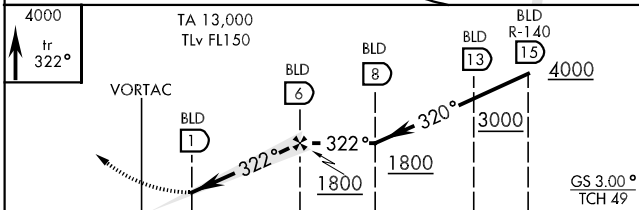


LOC I-BLD 109.9	APCH CRS 322°	Rwy ldg 11,490 THRE 160 Arpt Elev 161	AL-3163 [USAF]	BALAD SOUTHEAST (ORBD)
▼ * Non-Standard Lighting. Weather minimum based on NO-LIGHT criteria. ** Circling E of Rwy 14-32 not authorized.			ALSF-1 	MISSED APPROACH: Track 322° climbing to 4000, intercept BLD R-327 outbound to 15 DME and hold.
ATIS 247.2	BALAD SOUTHEAST APP CON 131.9 255.8	BALAD SOUTHEAST TOWER 119.875 368.4	GND CON 128.75 301.125	PAR



CATEGORY	A	B	C	D	E
S-ILS 32 *	358-1200m 197 (200-1200m)	364-1600m 203 (300-1600m)	374-1600m 213 (300-1600m)	384-1600m 223 (300-1600m)	404-1600m 243 (300-1600m)
S-LOC 32*	570-1600m 409 (500-1600m)		570-2000m 409 (500-2000m)		570-2400m 409 (500-2400m)
CIRCLING**	800-1600m 639 (700-1600m)		900-3200m 739 (800-3200m)	900-3600m 739 (800-3600m)	000-4800m 839 (900-4800m)

